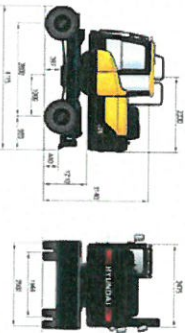


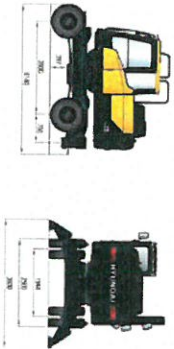
# UNDERCARRIAGE

# LIFTING CAPACITY

## HW140 WITH REAR DOZER



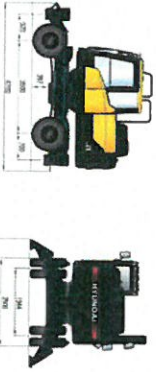
## HW140 WITH REAR OUTRIGGER



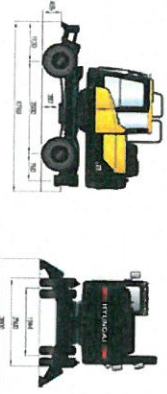
## HW140 WITH REAR DOZER AND FRONT OUTRIGGER



## HW140 WITH REAR AND FRONT OUTRIGGER



## HW140 WITH REAR OUTRIGGER AND FRONT DOZER



### HW140 MONO-BOOM

Boom: 4.6 m (15' 11") / Arm: 1.9 m (6' 3") / With rear dozer blade down and 1,700 kg counterweight

Lift-point height m (ft)	Lift-point radius					At max reach Capacity	Reach m (ft)
	1.5 m (4.9 ft)	3.0 m (9.8 ft)	4.5 m (14.8 ft)	6.0 m (19.7 ft)	7.5 m (24.6 ft)		
6.0m kg			*4,140	*4,140		*3,560	*3,560
19.7ft b			*9,130	*9,130		*7,850	*7,850
4.5m kg			*4,440	*4,200		*3,320	2,690
14.8ft b			*9,790	*9,260		*7,200	5,930
3.0m kg			*5,390	*3,960		*3,240	2,330
9.8ft b			*11,880	8,270		3,110	5,400
1.5m kg			5,470	3,780		3,110	2,220
4.9ft b			12,060	8,330		6,860	4,890
0.0m kg			*6,540	5,350		3,670	5,400
0.0ft b			*14,420	*11,290		8,090	7,280
-1.5m kg			*9,520	7,040		5,340	3,670
-4.9ft b			*20,990	15,320		11,770	8,090
-3.0m kg			7,410	7,230		7,230	6,090
-9.8ft b			*16,340	15,940		*11,160	9,150

Boom: 4.6 m (15' 11") / Arm: 1.9 m (6' 3") / With rear dozer blade up and 1,700 kg counterweight

Lift-point height m (ft)	Lift-point radius					At max reach Capacity	Reach m (ft)
	1.5 m (4.9 ft)	3.0 m (9.8 ft)	4.5 m (14.8 ft)	6.0 m (19.7 ft)	7.5 m (24.6 ft)		
6.0m kg			*4,140	*4,140		*3,560	*3,560
19.7ft b			*9,130	*9,130		*7,850	*7,850
4.5m kg			*4,440	4,200		*3,320	2,690
14.8ft b			*9,790	9,260		*7,200	5,930
3.0m kg			*5,390	3,960		*3,240	2,330
9.8ft b			*11,880	8,800		7,140	5,140
1.5m kg			5,470	3,790		3,110	2,220
4.9ft b			12,060	8,360		6,860	4,920
0.0m kg			*6,540	5,350		3,670	5,400
0.0ft b			*14,420	*11,290		8,110	7,280
-1.5m kg			*9,520	7,060		5,340	3,680
-4.9ft b			*20,990	15,360		11,770	8,110
-3.0m kg			7,410	7,230		7,230	6,090
-9.8ft b			*16,340	15,980		*11,160	9,170

Boom: 4.6 m (15' 11") / Arm: 2.1 m (6' 11") / With rear dozer blade down and 1,700 kg counterweight

Lift-point height m (ft)	Lift-point radius					At max reach Capacity	Reach m (ft)
	1.5 m (4.9 ft)	3.0 m (9.8 ft)	4.5 m (14.8 ft)	6.0 m (19.7 ft)	7.5 m (24.6 ft)		
6.0m kg			*3,870	*3,870		*3,400	3,390
19.7ft b			*8,530	*8,530		*7,500	7,470
4.5m kg			*4,230	4,210		*3,200	2,550
14.8ft b			*9,330	9,280		*7,050	5,620
3.0m kg			*5,200	3,990		*3,100	2,220
9.8ft b			*11,460	8,800		6,830	4,890
1.5m kg			5,460	3,770		2,880	2,180
4.9ft b			12,040	8,310		6,570	4,700
0.0m kg			*6,800	5,320		3,650	5,470
0.0ft b			*14,990	*11,300		8,050	7,560
-1.5m kg			*9,700	6,980		5,310	3,630
-4.9ft b			*21,380	15,390		11,710	8,000
-3.0m kg			7,510	7,160		7,160	6,000
-9.8ft b			*17,220	15,790		*11,070	8,290

1. Lifting capacity are based on ISO 10567

2. Lifting capacity of the ROBEK series does not exceed 75% of tipping load with the machine on firm, level ground or 87% of full hydraulic capacity.

3. The lift-point is located just mounting pin on the arm (without loader mass)

4. (\*) indicates load limited by hydraulic capacity.

# LIFTING CAPACITY

## H/W/40 MONO BOOM

Boom: 4.6 m (15' 1") / Arm: 2.1 m (6' 11") / With rear dower blade up and 1,700 kg counterweight

Lift-point height m (ft)	Lift-point radius						At max reach Capacity	Reach m (ft)
	1.5 m (4.9 ft)	3.0 m (9.8 ft)	4.5 m (14.8 ft)	6.0 m (19.7 ft)	7.5 m (24.6 ft)	9.0 m (29.5 ft)		
6.0m kg	☺	☺	☺	☺	☺	☺	☺	
19.7ft kg	☺	☺	☺	☺	☺	☺	☺	
4.5m kg	☺	☺	☺	☺	☺	☺	☺	
14.8ft kg	☺	☺	☺	☺	☺	☺	☺	
3.0m kg	☺	☺	☺	☺	☺	☺	☺	
9.8ft kg	☺	☺	☺	☺	☺	☺	☺	
1.5m kg	☺	☺	☺	☺	☺	☺	☺	
4.9ft kg	☺	☺	☺	☺	☺	☺	☺	
0.0m kg	☺	☺	☺	☺	☺	☺	☺	
-1.5m kg	☺	☺	☺	☺	☺	☺	☺	
-4.9ft kg	☺	☺	☺	☺	☺	☺	☺	
-3.0m kg	☺	☺	☺	☺	☺	☺	☺	
-9.8ft kg	☺	☺	☺	☺	☺	☺	☺	

Boom: 4.6 m (15' 1") / Arm: 2.5 m (8' 2") / With rear dower blade down and 1,700 kg counterweight

Lift-point height m (ft)	Lift-point radius						At max reach Capacity	Reach m (ft)
	1.5 m (4.9 ft)	3.0 m (9.8 ft)	4.5 m (14.8 ft)	6.0 m (19.7 ft)	7.5 m (24.6 ft)	9.0 m (29.5 ft)		
6.0m kg	☺	☺	☺	☺	☺	☺	☺	
19.7ft kg	☺	☺	☺	☺	☺	☺	☺	
4.5m kg	☺	☺	☺	☺	☺	☺	☺	
14.8ft kg	☺	☺	☺	☺	☺	☺	☺	
3.0m kg	☺	☺	☺	☺	☺	☺	☺	
9.8ft kg	☺	☺	☺	☺	☺	☺	☺	
1.5m kg	☺	☺	☺	☺	☺	☺	☺	
4.9ft kg	☺	☺	☺	☺	☺	☺	☺	
0.0m kg	☺	☺	☺	☺	☺	☺	☺	
-1.5m kg	☺	☺	☺	☺	☺	☺	☺	
-4.9ft kg	☺	☺	☺	☺	☺	☺	☺	
-3.0m kg	☺	☺	☺	☺	☺	☺	☺	
-9.8ft kg	☺	☺	☺	☺	☺	☺	☺	

Boom: 4.6 m (15' 1") / Arm: 2.5 m (8' 2") / With rear dower blade up and 1,700 kg counterweight

Lift-point height m (ft)	Lift-point radius						At max reach Capacity	Reach m (ft)
	1.5 m (4.9 ft)	3.0 m (9.8 ft)	4.5 m (14.8 ft)	6.0 m (19.7 ft)	7.5 m (24.6 ft)	9.0 m (29.5 ft)		
6.0m kg	☺	☺	☺	☺	☺	☺	☺	
19.7ft kg	☺	☺	☺	☺	☺	☺	☺	
4.5m kg	☺	☺	☺	☺	☺	☺	☺	
14.8ft kg	☺	☺	☺	☺	☺	☺	☺	
3.0m kg	☺	☺	☺	☺	☺	☺	☺	
9.8ft kg	☺	☺	☺	☺	☺	☺	☺	
1.5m kg	☺	☺	☺	☺	☺	☺	☺	
4.9ft kg	☺	☺	☺	☺	☺	☺	☺	
0.0m kg	☺	☺	☺	☺	☺	☺	☺	
-1.5m kg	☺	☺	☺	☺	☺	☺	☺	
-4.9ft kg	☺	☺	☺	☺	☺	☺	☺	
-3.0m kg	☺	☺	☺	☺	☺	☺	☺	
-9.8ft kg	☺	☺	☺	☺	☺	☺	☺	

☺ Raising over-front ☺ Raising over-side or 360 degree

## H/W/40 MONO BOOM

Boom: 4.6 m (15' 1") / Arm: 3.0 m (9' 10") / With rear dower blade down and 1,700 kg counterweight

Lift-point height m (ft)	Lift-point radius						At max reach Capacity	Reach m (ft)
	1.5 m (4.9 ft)	3.0 m (9.8 ft)	4.5 m (14.8 ft)	6.0 m (19.7 ft)	7.5 m (24.6 ft)	9.0 m (29.5 ft)		
6.0m kg	☺	☺	☺	☺	☺	☺	☺	
19.7ft kg	☺	☺	☺	☺	☺	☺	☺	
4.5m kg	☺	☺	☺	☺	☺	☺	☺	
14.8ft kg	☺	☺	☺	☺	☺	☺	☺	
3.0m kg	☺	☺	☺	☺	☺	☺	☺	
9.8ft kg	☺	☺	☺	☺	☺	☺	☺	
1.5m kg	☺	☺	☺	☺	☺	☺	☺	
4.9ft kg	☺	☺	☺	☺	☺	☺	☺	
0.0m kg	☺	☺	☺	☺	☺	☺	☺	
-1.5m kg	☺	☺	☺	☺	☺	☺	☺	
-4.9ft kg	☺	☺	☺	☺	☺	☺	☺	
-3.0m kg	☺	☺	☺	☺	☺	☺	☺	
-9.8ft kg	☺	☺	☺	☺	☺	☺	☺	
-14.8ft kg	☺	☺	☺	☺	☺	☺	☺	

Boom: 4.6 m (15' 1") / Arm: 3.0 m (9' 10") / With rear dower blade up and 1,700 kg counterweight

Lift-point height m (ft)	Lift-point radius						At max reach Capacity	Reach m (ft)
	1.5 m (4.9 ft)	3.0 m (9.8 ft)	4.5 m (14.8 ft)	6.0 m (19.7 ft)	7.5 m (24.6 ft)	9.0 m (29.5 ft)		
6.0m kg	☺	☺	☺	☺	☺	☺	☺	
19.7ft kg	☺	☺	☺	☺	☺	☺	☺	
4.5m kg	☺	☺	☺	☺	☺	☺	☺	
14.8ft kg	☺	☺	☺	☺	☺	☺	☺	
3.0m kg	☺	☺	☺	☺	☺	☺	☺	
9.8ft kg	☺	☺	☺	☺	☺	☺	☺	
1.5m kg	☺	☺	☺	☺	☺	☺	☺	
4.9ft kg	☺	☺	☺	☺	☺	☺	☺	
0.0m kg	☺	☺	☺	☺	☺	☺	☺	
-1.5m kg	☺	☺	☺	☺	☺	☺	☺	
-4.9ft kg	☺	☺	☺	☺	☺	☺	☺	
-3.0m kg	☺	☺	☺	☺	☺	☺	☺	
-9.8ft kg	☺	☺	☺	☺	☺	☺	☺	
-14.8ft kg	☺	☺	☺	☺	☺	☺	☺	

☺ Raising over-front ☺ Raising over-side or 360 degree

1. Lifting capacity are based on ISO 10567  
2. Lifting capacity of the HICREX series does not exceed 75% of tipping load with the machine on firm, level ground or 87% of full hydraulic capacity.

3. The lift point is bracket pivot mounting pin on the arm/horizontal bracket mast.  
4. (\*) indicates load limited by hydraulic capacity.

